

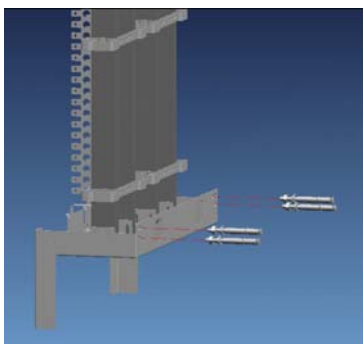
1380 Pairs Distribution Frame

CNSNE-2018

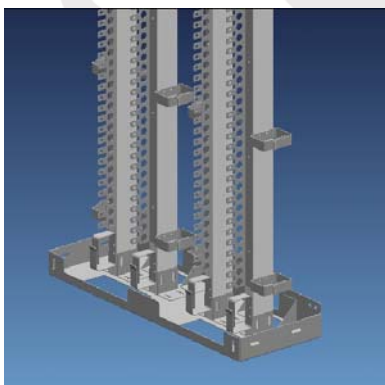
**SPECIFICATION**

The Distribution Frame is a double vertical, modular distribution frame offering ease of transport and flexibility of installation.

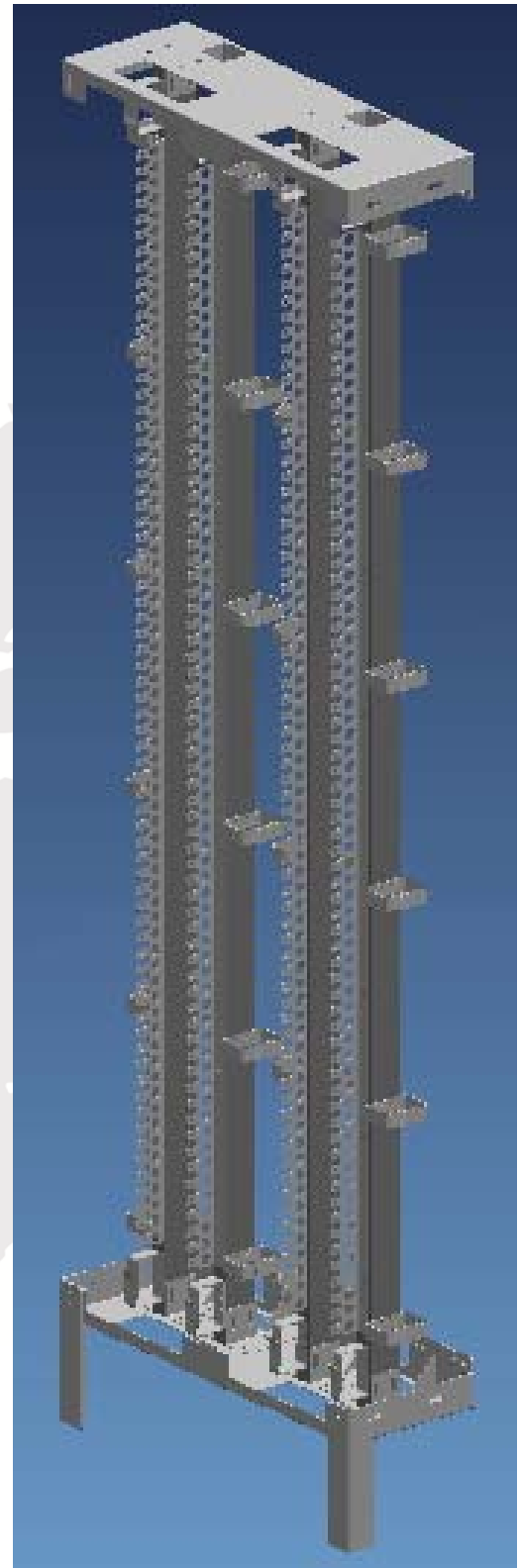
- Material: Distribution Frame used is 1.5mm cold rolled-steel, Gray powder coating.
- Capacity: 1380 Pairs ( using 10 pairs module.)
- Weight: about 13Kg



Distribution Frame is fixed with the screws in the wall.



Distribution Frame without Legs.



Dimensions	Height×Width×Depth
With legs	1920×594×210(mm)
Without legs	1770×594×210(mm)

**HONG KONG (HK) Limited**

Unit 1303, 13/F, Beverly House, 93 -107 Lockhart Road, Wanchai, Hong Kong.  
 香港灣仔駱克道93107-號利臨大廈13樓1303室

Tel. : (852) 28639635 Fax : (852) 21296534 Mob.: (86) 18218762001

**EGYPT**

15 Sakalia St., From Makram Abeed, 3<sup>rd</sup> Floor, Nasr City, Cairo, Egypt.

Tel. : +202 2671 8862 / 3 Fax : +202 2275 2976 Mob.: +2012 2213 3810